

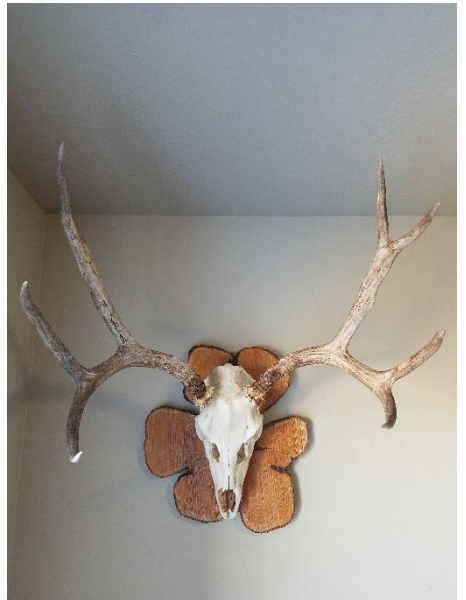


PRODUCT REVIEW

STEVEN MAICHAK

JANUARY 10, 2019

This past year, I was fortunate enough to harvest a handsome mule deer buck during the general muzzleloader season in my new state of residence, Utah. Pleased with my trophy, I knew I wanted to show off his rack in some sort of Euro mount presentation. I already had a nice clover-shaped juniper tree cross section I wanted to use in a project, and I realized it would make the perfect backdrop for my mount. However, I still needed a good mounting system to use in combination with the wooden plaque, and that's how I eventually stumbled upon *Dead On Display*. Their customer service is clearly a priority as the product was delivered quickly along with a tracking number sent directly to my e-mail the same day I ordered the mount. Upon arrival, I found the packaging to be both visually appealing and informative.



Dead On Display proudly “shows of your trophy, not the mounting system.” There is a lot of good to be said for keeping the mount’s design clean and simple. However, with simplicity comes versatility. The design and method in which the *Dead On Display* mounting system securely hugs the skull’s weight against the wall allows it to effortlessly work in conjunction with a variety of backdrops for increased creativity in the display presentation.

As a proud outdoorsman, I want to share my success with hunters and non-hunters alike in an appealing, classy manner. *Dead On Display* allows me to decide how I want to present my trophies – with the mounting system hidden to keep the focus on the skull and rack, or used in combination with a backdrop to dress up the arrangement at my discretion. I chose to incorporate the simple mount into my own creative display. The crown of my success now poses on the wall as a visually pleasing and secure presentation rather than a precarious eye sore waiting to come tumbling down. Needless to say, I am “hooked” on *Dead On Display* products and look forward to using them again in the near future!

